

# CAMPUS RÉGION DU NUMÉRIQUE



# A CAMPUS AT THE HEART OF AN AMBITIOUS REGIONAL POLICY

The Auvergne-Rhône-Alpes Region is committed to supporting digital development that is **adapted to the needs of our residents and the region.**

## MORE CONCRETE SERVICES

- ✓ DEMATERIALIZED AND SIMPLIFY RELATIONS BETWEEN THE ADMINISTRATION AND RESIDENTS
- ✓ SECURE THE USE OF NEW TECHNOLOGIES TO ENSURE TRUE DIGITAL CITIZENSHIP

## HIGHLY DEVELOPED NETWORKS

- ✓ PROVIDE VERY HIGH-SPEED INTERNET ACCESS (30 MBS) TO THE ENTIRE REGION
- ✓ EQUIP DEAD ZONES FOR BETTER MOBILE PHONE COVERAGE

## OUR OBJECTIVE: EMPLOYMENT!

- ✓ MEET THE NEEDS OF COMPANIES AND THE ECONOMY
- ✓ TEACH YOUNG PEOPLE AND EMPLOYEES NEW SKILLS



**La Région**  
Auvergne-Rhône-Alpes

**€650**  
MILLION

INVESTED  
IN 5 YEARS

**CAMPUS**  
**RÉGION**   
**DU NUMÉRIQUE**



# MEET REAL NEEDS

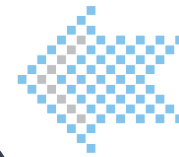
**” FILL A SHORTAGE OF QUALIFIED WORKERS  
IN THE NEW PROFESSIONS IN AUVERGNE-RHÔNE-ALPES ”**



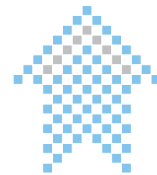
**” BETTER ADAPT  
TRAINING PROGRAMMES TO  
THE TRANSFORMATION NEEDS  
OF COMPANIES ”**



**CAMPUS  
RÉGION    
DU NUMÉRIQUE**



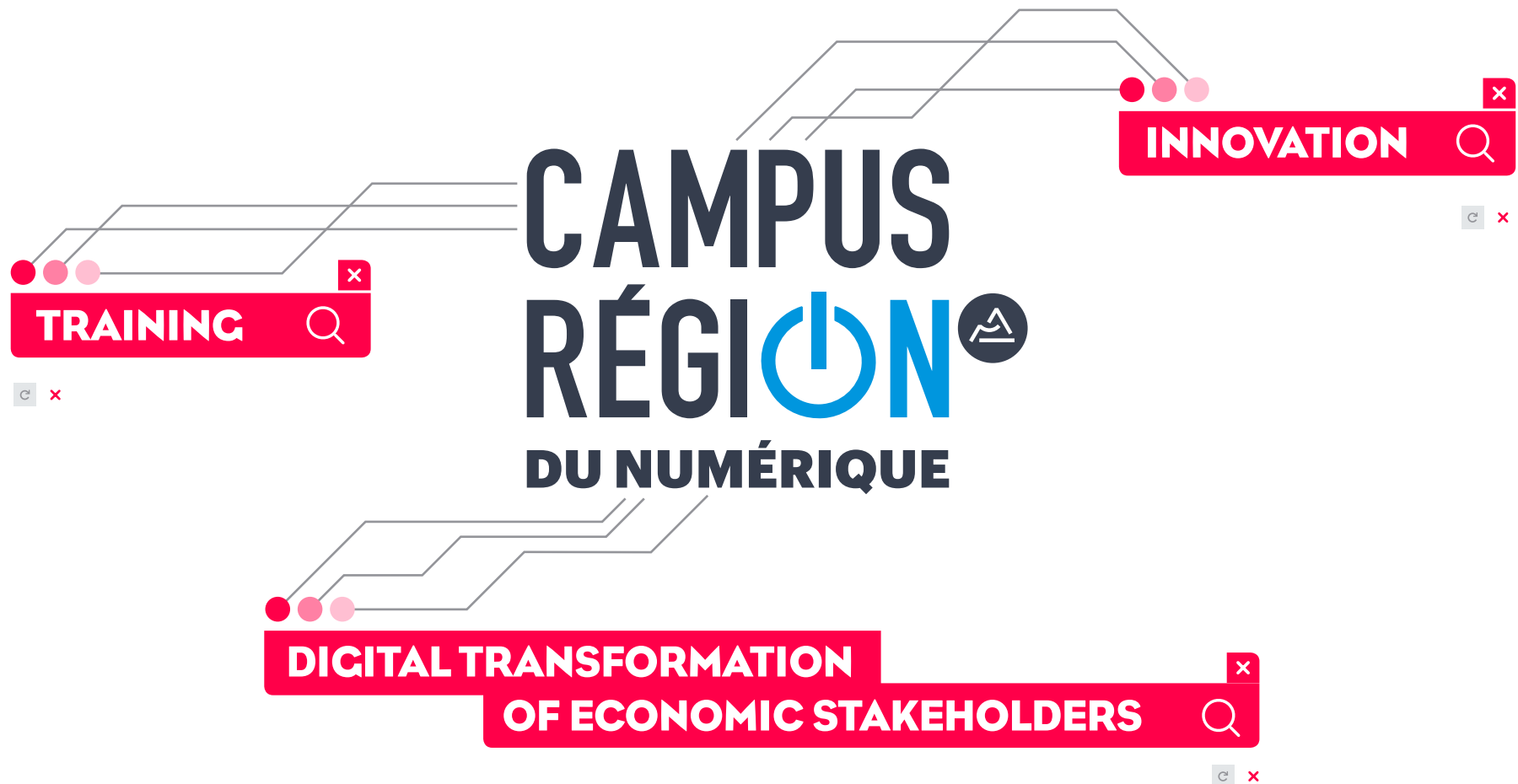
**” REDUCE  
THE DIGITAL DIVIDE AT  
THE REGIONAL LEVEL ”**



**” HELP MORE EMPLOYEES  
AND ENTREPRENEURS LEARN ABOUT  
AND USE TECHNOLOGIES ”**

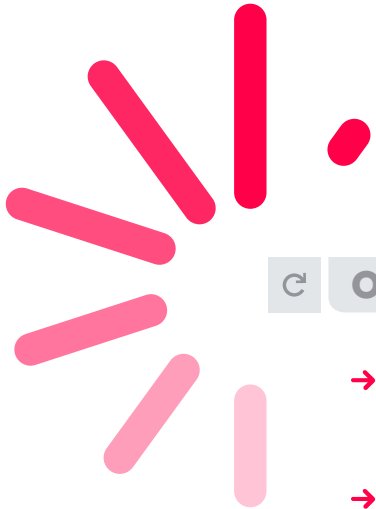


1 CAMPUS,  
3 COMPONENTS,  
A REGIONAL PRESENCE









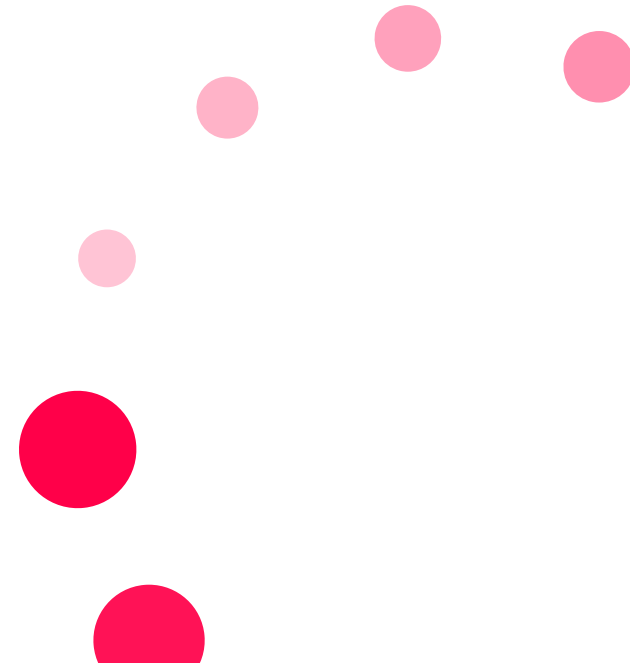
## ON CAMPUS

- A COLLECTIVE COMMITMENT TO THE INDUSTRY OF THE FUTURE
- **AGILE AND SHARED TOOLS:** A SHARED PLATFORM, LABORATORIES, COLLABORATIVE TOOLS...
- **THE MINASMART DIH** (DIGITAL INNOVATION HUB)



## ACROSS THE REGION

THE FABREGION LABEL AND CREATION OF A NETWORK OF FAB LABS AND OTHER THIRD PLACES



SINCE SEPTEMBER 2017

# THE REGIONAL CAMPUS TODAY

→ At Lyon Confluence,  
and throughout the region.



## AN ENGAGING CAMPUS

- A PLACE TO LIVE AND WORK
- OPEN 24 HOURS A DAY,  
7 DAYS A WEEK
- OPEN, MODULAR SPACES  
THAT ARE IDEAL FOR GROUP WORK
- EVERYDAY SYNERGIES

## A CAMPUS AND ITS NETWORKS

- TRAINING PROGRAMMES  
ADAPTED TO COMPANIES' NEEDS
- JOINT ACTIVITIES AND PROJECTS:  
SPEED RECRUITING, HACKATHONS, ETC.
- EASIER ACCESS TO EMPLOYMENT FOR  
OUR GRADUATES/CERTIFICATE HOLDERS

CAMPUS  
RÉGION  
DU NUMÉRIQUE



SINCE SEPTEMBER 2017

# THE REGIONAL CAMPUS TODAY

→ At Lyon Confluence,  
and throughout the region.

## AN INCLUSIVE CAMPUS

- EFFORTS TO SUPPORT PEOPLE WITH DISABILITIES AND GENDER EQUALITY
- ALL BACKGROUNDS, FROM SCIENTISTS TO THE CREATIVE PROFESSIONS
- ALL AGES, FROM SECONDARY SCHOOL STUDENTS TO 50-YEAR-OLDS
- ALL LEVELS, FROM SECONDARY SCHOOL CERTIFICATES TO 6 YEARS OF UNIVERSITY STUDIES
- ALL PROFESSIONS: DEVELOPERS, PROJECT MANAGERS, WEB DESIGNERS, CYBERSECURITY EXPERTS, SYSTEMS AND NETWORKS MANAGERS, MAINTENANCE TECHNICIANS, COMMUNITY MANAGERS, DATA SCIENTISTS, 3D ANIMATORS, INDUSTRIAL TECHNICIANS



## A CAMPUS WITH A REGIONAL OUTLOOK

- THE FLAGSHIP PROJECT OF AN AMBITIOUS POLICY FOR THE REGION'S DIGITAL DEVELOPMENT
- A NETWORK OF FAB LABS, TRAINING PROGRAMMES, AND LOCAL INITIATIVES
- LOCAL ACTIONS TO ENGAGE WITH CITIZENS AND BUSINESSES

**STARTING IN SEPTEMBER 2020**

# THE REGIONAL CAMPUS TOMORROW

→ In Charbonnières-les-Bains, with a stronger presence across the region

A powerful architectural vision for a landmark building



## THREE AIMS

- PROVIDE TRAINING ON TOMORROW'S JOBS AND NEW SKILLS
- FACILITATE THE DIGITAL TRANSFORMATION OF ECONOMIC STAKEHOLDERS
- FOSTER A TURNING POINT IN THE INDUSTRY OF THE FUTURE

**THE HUB THAT ACCELERATES THE REGION'S DIGITAL TRANSFORMATION**

## CONCRETE ECONOMIC AND SOCIAL IMPACT

Regional excellence in industrial transformation through digital technology

An agile and collaborative research and innovation plant

Research labs and companies that are leaders in their fields

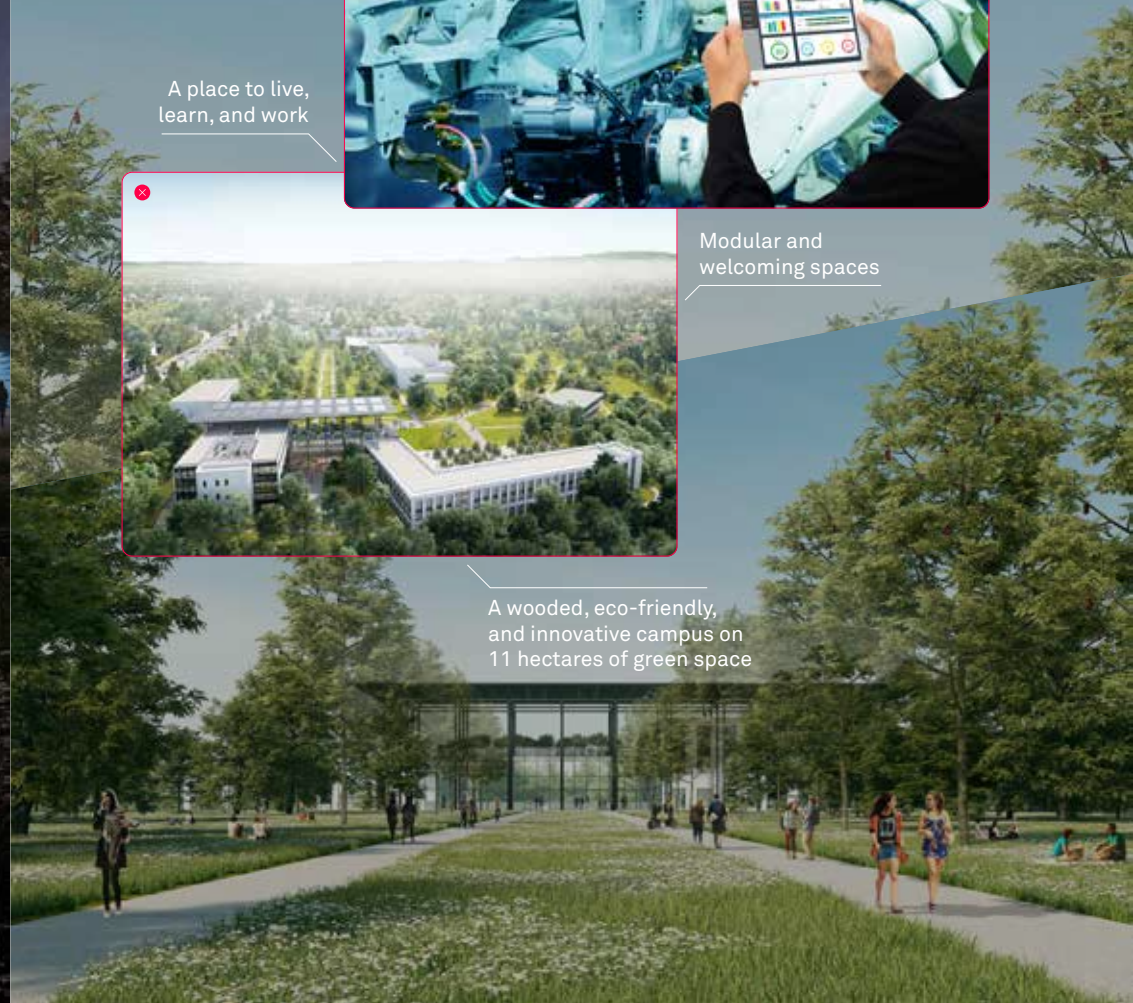
A place to live, learn, and work



Modular and welcoming spaces



A wooded, eco-friendly, and innovative campus on 11 hectares of green space



# CAMPUS RÉGION<sup>®</sup> DU NUMÉRIQUE

An initiative by



**La Région**  
Auvergne-Rhône-Alpes

[www.campus-region.fr](http://www.campus-region.fr)

 @CampusRegion  [linkedin.com/company/campus-region](https://www.linkedin.com/company/campus-region)

**Campus Région du numérique**  
11 passage Panama, 69002 Lyon  
FRANCE

[campus.region@auvergnerhonealpes.fr](mailto:campus.region@auvergnerhonealpes.fr)